

INDONESIA

JAKARTA

CONTACT

Jalan Terminal Kalibaru Raya Kav.B No.1,
Kelurahan Kalibaru, Kecamatan Cilincing,
Jakarta Utara 14110, Indonesia

GOH SENG LEE

Regional Director

Email : gohsl@globalpsa.com

Tel : +62 212 9144888

Fax : +62 212 9144889

Website : www.npct1.co.id

NEW PRIOK CONTAINER TERMINAL ONE

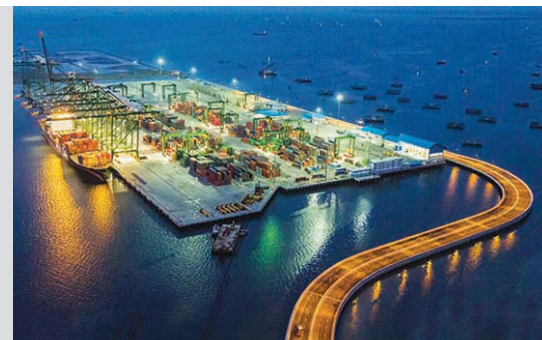


Tanjung Priok is Indonesia's largest port by container volume and serves as its main gateway to international markets. To support the country's rapid container growth and energise Indonesia's international trade, Tanjung Priok is undergoing expansion and upgrading.

New Priok Container Terminal One (NPCT1) is the first terminal of Indonesia's New Priok development and is well-positioned to provide best-in-class port services to its customers, partners and other stakeholders. The terminal is equipped with deep draft and the most modern facilities to serve mega container vessels with the highest productivity levels in Jakarta.



Facilities	
Container berths	3
Quay length (m)	850
Area (ha)	32
Max depth at Chart Datum (m)	16
Quay cranes	9
Designed capacity ('000 TEUs)	1,500



SOUTHEAST ASIA
Indonesia
 NORTHEAST ASIA
 MIDDLE EAST
SOUTH ASIA,
AFRICA, TURKIYE
 EUROPE
 AMERICAS